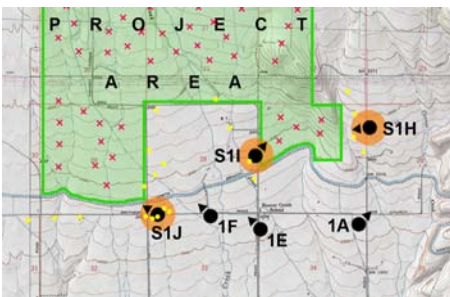
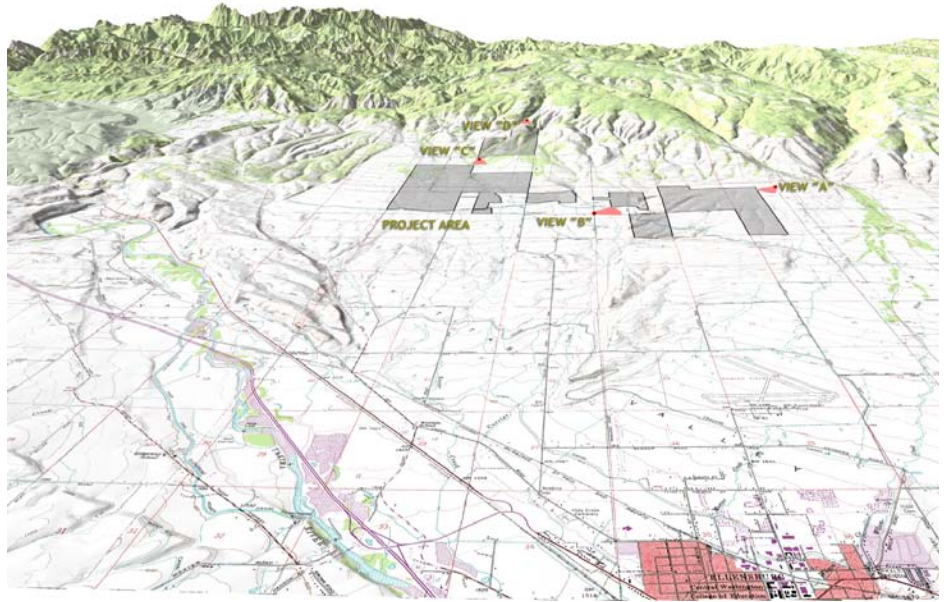




DESERT CLAIM WIND POWER SITING

KITTITAS COUNTY, WASHINGTON

DESERT CLAIM WIND PROJECT



Jones & Jones prepared a visual analysis of a proposed wind energy facility in the ranchlands of Washington's Kittitas County.

Key aspects of our work included documenting the intrinsic character of the rural landscape, evaluating the impact of changes to this rural character and addressing the concerns of viewer groups.

Our work was key to a revised siting plan improving the facility's impact on the landscape and an Environmental Impact Statement that resulted in no appeals from the community.

FACTS

- 95 turbines
- 180 megawatts of renewable energy

BENEFITS

- Successful EIS
- Minimal visual impact to landscape

JONES  JONES

ARCHITECTS
LANDSCAPE ARCHITECTS
PLANNERS