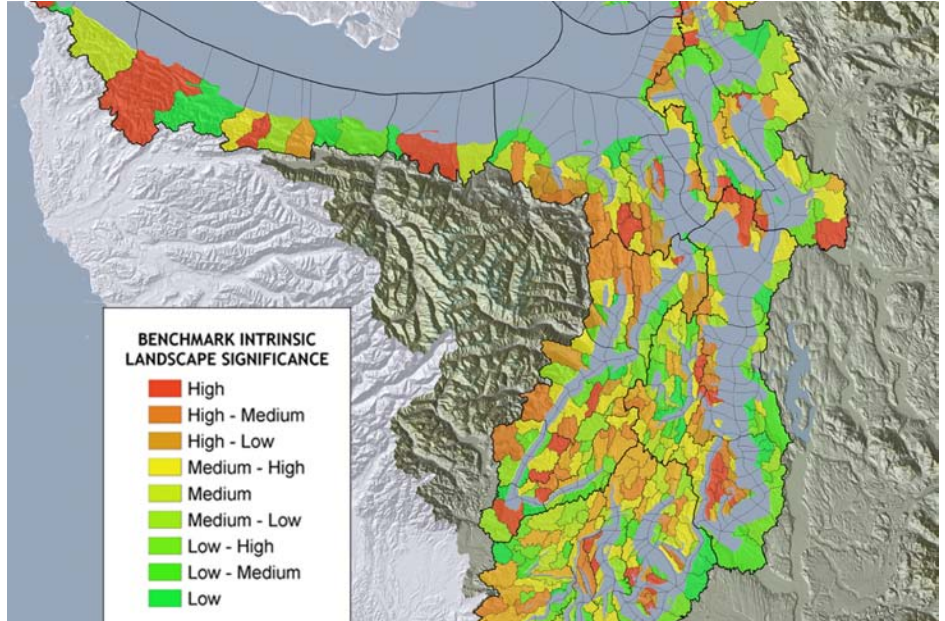
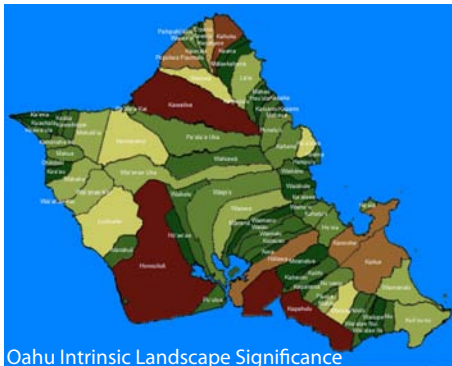
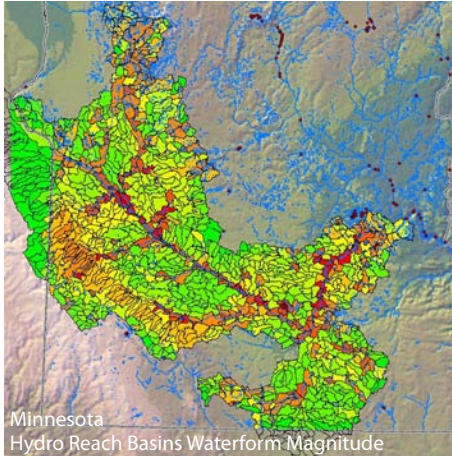




**ILARIS**©

VARIOUS LOCATIONS

ESRI



**Jones & Jones has created an open-source, watershed-based GIS tool to help landowners and community leaders identify the foremost examples of their regional landscape—their signature landscapes—and to support decision-making to protect these scenic, ecological, and culturally sensitive lands.**

The ILARIS model is adaptable and can be used to process the characteristic landscape data from any region. By measuring and monitoring the intrinsic aesthetic landscapes, we can help communities understand how comparatively rare these landscape features are in their own sub-regions, in the larger regions, and, in fact, in the world.

ILARIS has been tested and implemented for a variety of institutions throughout the country, including the Trust for Public Land, the Washington State Department of Natural Resources, the Puget Sound Partnership, the Blackfeet Nation, and the University of Texas, Austin.

**Honor Award—Research Category, 2006**  
American Society of Landscape Architects National Awards

**Merit Award—Research and Communication Category, 2005**  
American Society of Landscape Architects Washington Chapter

JONES  JONES

ARCHITECTS  
LANDSCAPE ARCHITECTS  
PLANNERS