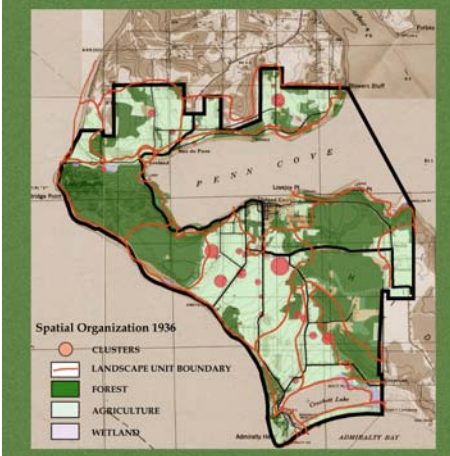
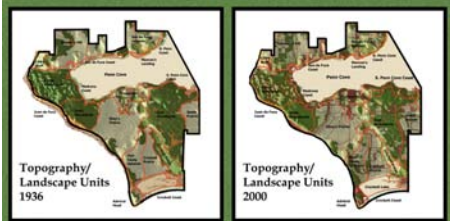




EBEY'S LANDING NATIONAL HISTORICAL RESERVE

WHIDBEY ISLAND, WASHINGTON

NATIONAL PARK SERVICE



Rich agricultural prairies, woodlands, shorelines and historic structures make up this heritage landscape that illustrates a continuing story of exploration and settlement in Puget Sound—a unique national park comprised almost entirely of private land.

Jones & Jones documented the historic landscape features that qualify the reserve to be listed on the National Register of Historic Places. We also identified the landscape patterns that are critical to preserving the historic landscape's integrity. We then developed a set of conservation tools and strategies the Park Service can apply to sustain the landscape within a working community, where farms are still farmed, forests are logged and historic buildings are actively used as homes or businesses.

FACTS

- Created in 1978
- 17,000 acres, including the historic town of Coupeville
- History of Native American use, early pioneer emigration and military encampments
- Working farms and forests
- Walking and biking trails
- Scenic vistas

BENEFITS

- Heritage landscape preservation
- Pacific Northwest history visible in the landscape

Merit Award—Historic Preservation, 2003
American Planning Association/Planning Association of Washington

JONES  JONES

ARCHITECTS
LANDSCAPE ARCHITECTS
PLANNERS