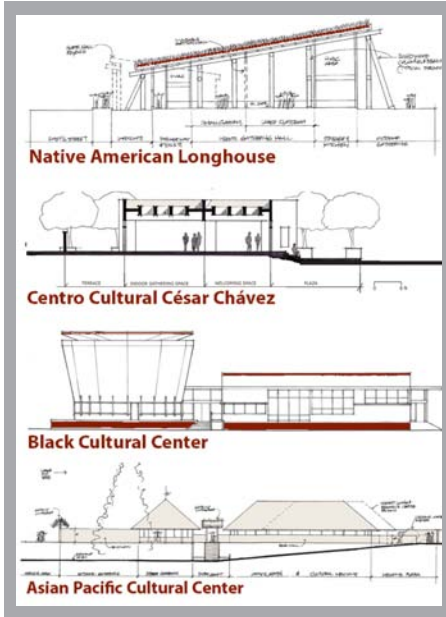




# OREGON STATE UNIVERSITY CULTURAL CENTERS AND OPEN SPACE PLAN

CORVALLIS, OREGON

OREGON STATE UNIVERSITY



## Four student cultural centers on the campus of Oregon State University will provide gathering places for Asian, African-American, Latino, and Native American students.

Jones & Jones worked with four OSU Campus Diversity Student Groups, facility advisors, and administrative staff to establish the program, select sites, and develop culturally respectful conceptual designs and graphics to raise financial support for the projects. While dispersed throughout the campus, the centers will be linked in the cultural center corridor by views, open spaces, paving design, site furniture, and public art.

The centers will honor the cultures of the student communities and enrich campus life.

### FACTS

- Occupancy: 100–200 for each building
- Multi-purpose rooms for study, musical performances, mini-conferences, and gatherings
- Commercial kitchens for individual use and events
- Technology: computer labs, multimedia and wireless capabilities
- Library and archives

### BENEFITS

- A sense of home and belonging for culturally specific student communities
- Educational opportunities and programs for academic and social success

JONES & JONES

ARCHITECTS  
LANDSCAPE ARCHITECTS  
PLANNERS